

Modulation - Laying out

1500 mm and 2000 mm to the axes of the anchorage base.

BT Series		
Model	1.500 mm	2.000 mm
BTL	•	•
BTA N	•	•
BTS	•	•
BTV	•	•
BTQ	•	

BP Series

Model	1.500 mm	2.000 mm
BPA N	•	•
BPS	•	•
BPV	•	•
BPQ	•	

It is necessary to reserve 100 mm, from the axe of the end base, at the ends of sections.

*For especial modulations, please consult our Technical Office.

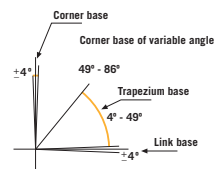
Adaptation to curves

Straight frames and standard anchorage bases for designs with a greater radius of 15 m, making the most of 4° tolerance in every anchorage base.

Anchorage bases of trapezium sections made to measure to adapt themselves to curved designs with straight standard frames.

Special curved frames, minimum radius 1,5m and the desired length.

Angular gaps of the usage of the different sorts of bases:



Deviation assumed according to the sort of base or ideal size of railings:

- Corner base $K = 90^\circ$
- Corner base of variable angle $K = 49^\circ - 86^\circ$
- Trapezium base $K = 4^\circ - 49^\circ$
- Link base $K < 4^\circ$



Corner base.



Link trapezium base for adaptation to curves.

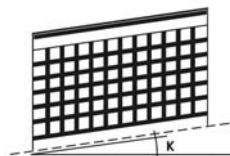


Adaptation to slopes

The transverse elements of the railing frame (parallel to the floor) are adapted to slopes forming a variable angle (30° maximum) together with the vertical elements.

Suitable for continuous slopes and sloping sections.

Useful to solve slopes and steps.



Types of installation

Removable:

- The anchorage plate is screwed onto the floor
- The frames and the anchorage plates are removable

Half-removable:

- The anchorage plate is Embedded in concrete
- Only the railing frames are removable

Types of anchorage



PBT series
Anchorage for screwing onto the floor.



PBM series
Anchorage base made to measure for screwing onto the slab.



PBC series
Anchorage base made to measure for screwing onto the slab edge.



PBF series
Anchorage base for screwing onto the slab edge.



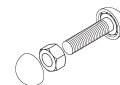
PBR series
Root fixed: Embedded in concrete

All the anchorage bases are made of plates 10 mm thick and solid rods of 50x25 mm.

Screws and caps

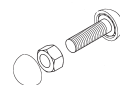
Standard elements for the right fastening of the railing frames to the anchorage bases and for the right fastening of the anchorage bases to the floor or slab.

Protected by security caps, machining in steel, they provide anti-vandalism protection. This element can be made of stainless steel or zinc coated iron, but always treated and keeping the same finish as the rest of the elements.



Ref.: TTR-M12-E

Union between elements. Link.



Ref.: TTR-M12-R

Union between elements. Finish.



Ref.: TTR-M12-C

Union between elements. Trapezium link.



Ref.: TTM-M10

Fastening to the floor (concrete).